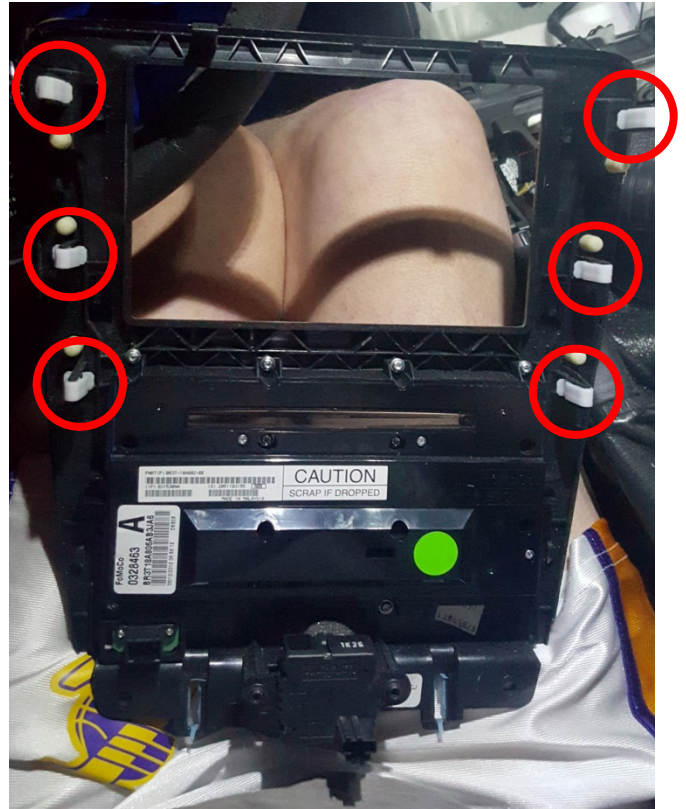


CAR PERFORMANCE

Before installation, disconnect the car battery

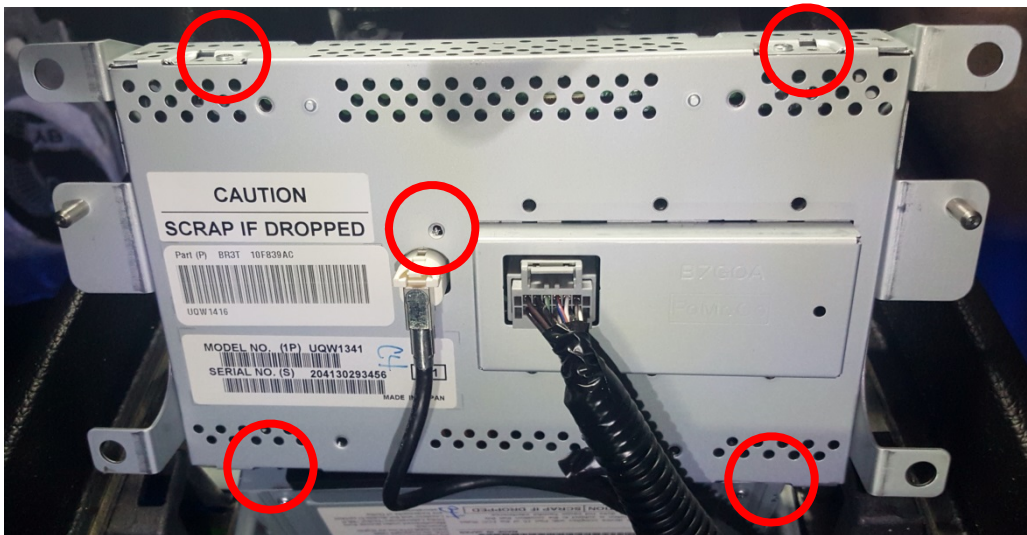
First, remove the front panel of the LCD panel : 1 screw down each side (7 mm), after you remove the panel gently (6 clips)



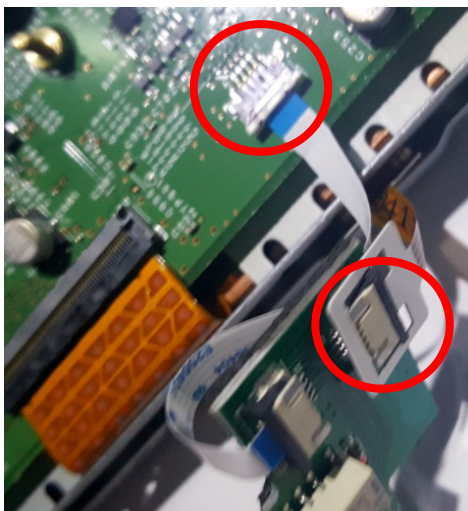
After You can remove the LCD Panel and the CD module : 6 screws (7 mm) – after disconnect the LCD panel



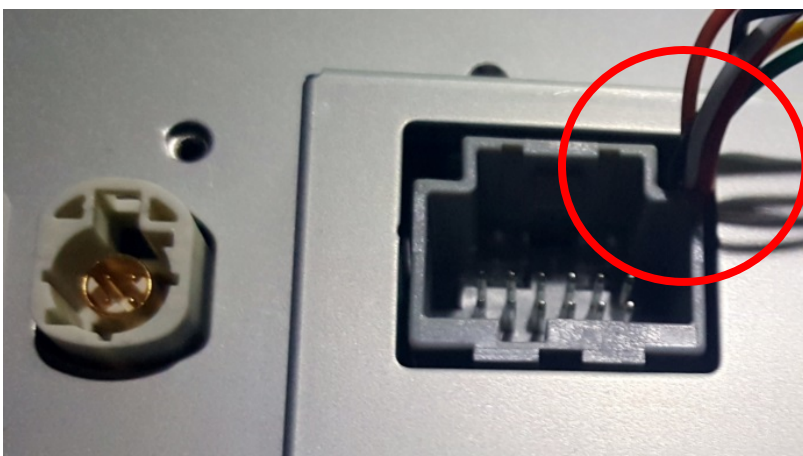
When the LCD panel is disconnected, you can open carefully ! : 5 screws (small Phillips screwdriver)



Now You can install the small electronic like on the left picture, after You can fix it with the little screw like the right picture

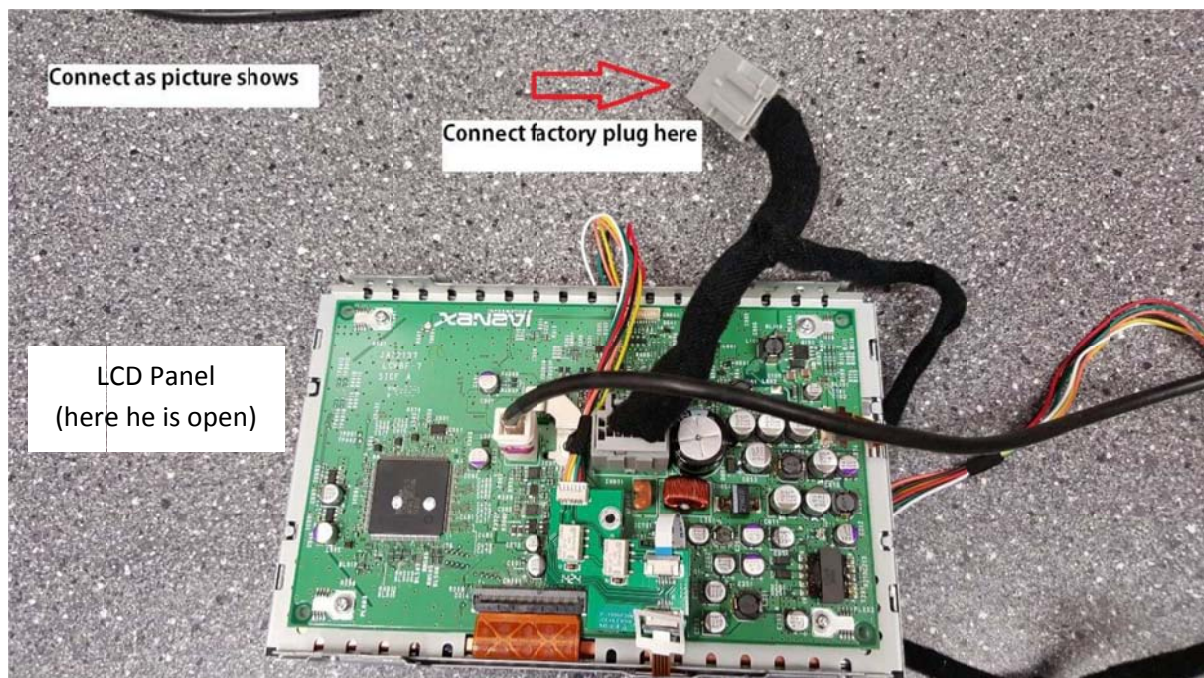
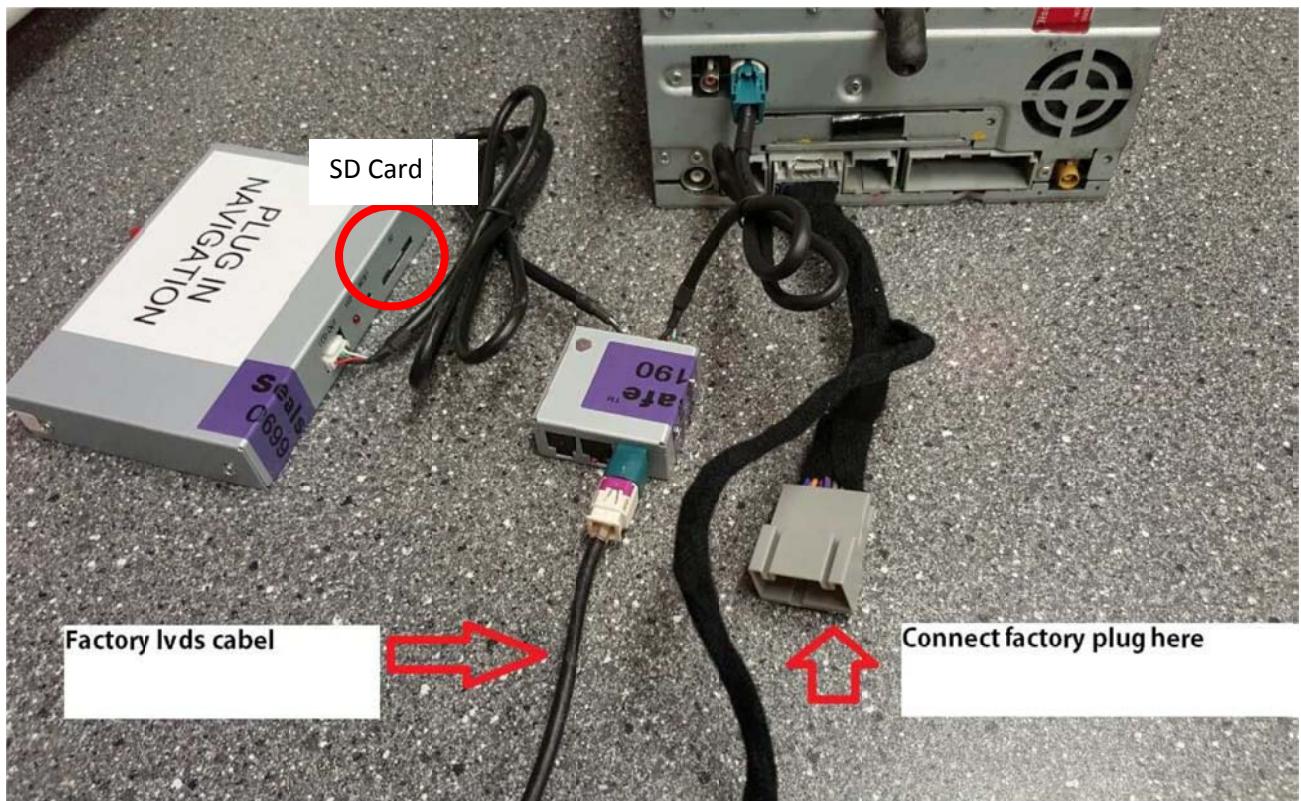


Then You can connect this circuit (right picture), do not forget to pass the cable as the picture below (left picture)



You can now close the housing of the LCD with the 5 screws

Next step is to connect the rest of the cable to the main unit (CD)



Don't forget to connect the GPS antenna !



Connect the speaker to the harness.

Place the speaker behind the screen facing you and place the GPS antenna behind the screen in a good position facing upwards the windshield (GPS antenna is magnetic, easy to fix)

Before turning the ignition on, eject the SD Card from the gps box

ACTIVATE THE NEW ADDED NAVIGATION MODULE, PRESS ONE OF THE FOLLOWING HARD KEY BUTTONS :

MAP/DEST/NAV

A + will appear, press it till it says OK (use the pencil for calibrate the screen, 5 times on the +, center and after the 4 corners) and press OK.

Now insert the SD Card and follow the manual

When finish and your new GPS work, You can reassemble all the component 😊